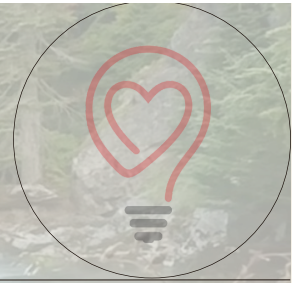


LIGHT OF LOVE GALA 2024



Frequently Asked Questions

Can I bring my kids with me?	Due to the sensitive and sometimes gritty details of the industry we work with, we ask that you leave your kids under 16 at home. Parental discretion is advised for anyone under 18.
Will you have childcare available?	We love your kids! But no, this event will not have childcare available.
I have food allergies / dietary sensitivities. What are my options?	If you have a severe food allergy, you'll be able to let us know when you purchase your ticket. We are not able to accommodate dietary sensitivities, but we will do our best to make ingredient information available at the event.

More questions?

Please email here@lightloveseattle.org